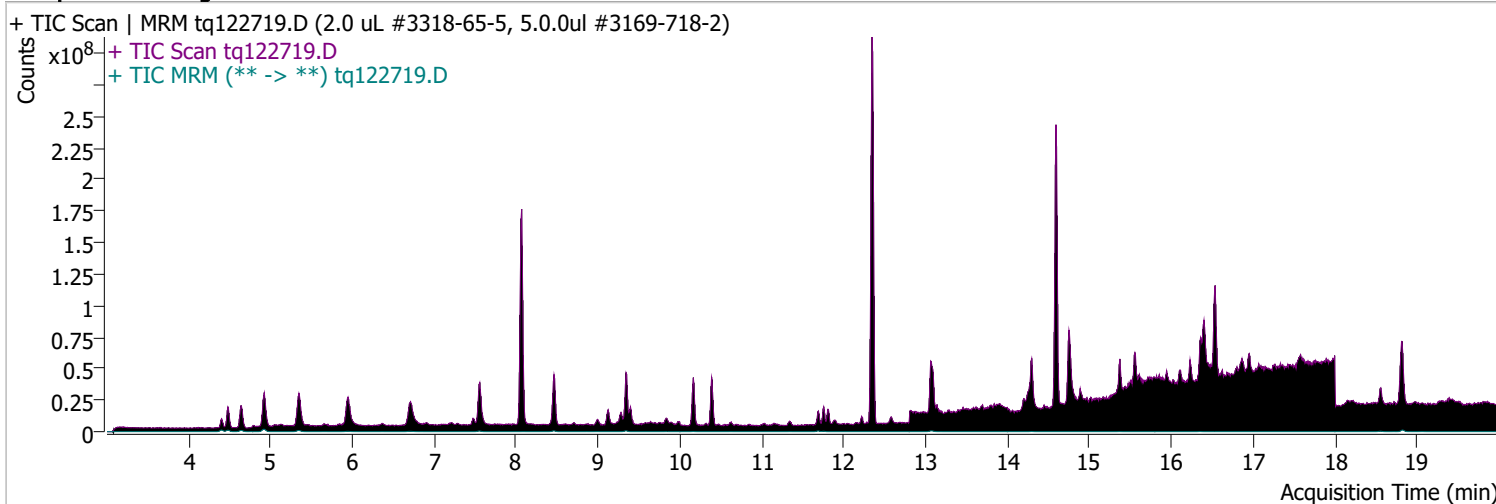


Quantitative Analysis Sample Report

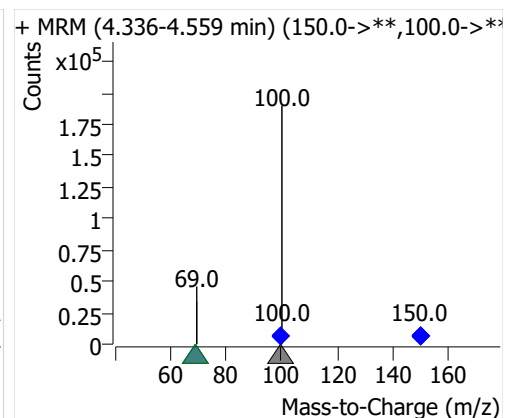
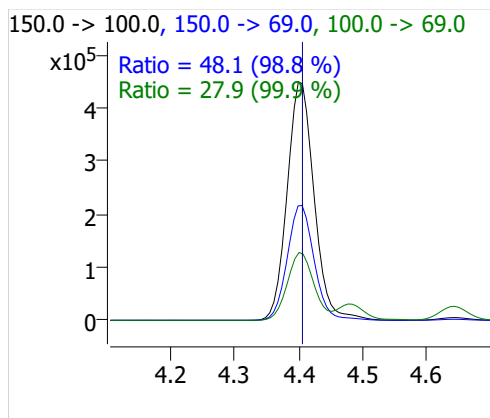
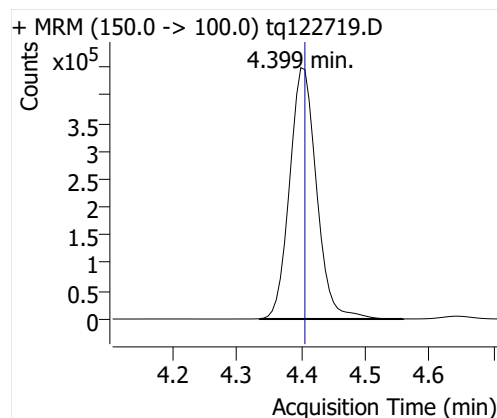
| | | | |
|---------------------|--|----------------------|--|
| Batch Path | D:\MassHunter\GCMS\1\data\27dec22a\QuantResults\tq22m1227a.batch.bin | | |
| Analysis Time | 1/3/2023 2:39 PM | Analyst Name | TAI\us32_usr_ins22923 |
| Report Time | 1/5/2023 3:17:24 PM | Reporter Name | TAI\us32_usr_ins22923 |
| Last Calib Update | 1/3/2023 2:39 PM | Batch State | Processed |
| Quant Batch Version | 10.1 | Quant Report Version | 10.1 |
| Acq. Time | 12/27/2022 4:33 PM | Data File | tq122719.D |
| Sample Type | Cal | Sample Name | 2.0 uL #3318-65-5, 5.0.0ul #3169-718-2 |
| Dilution | 1 | Acq. Method | tq22m1209 |

Sample Chromatogram

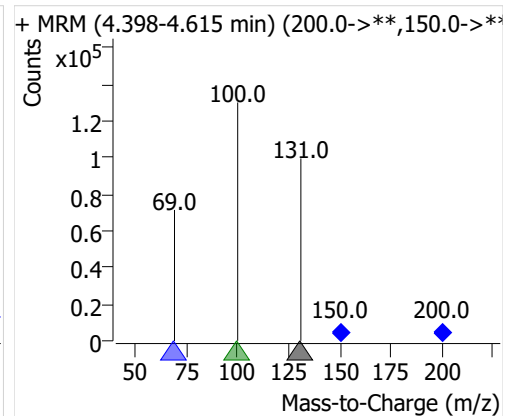
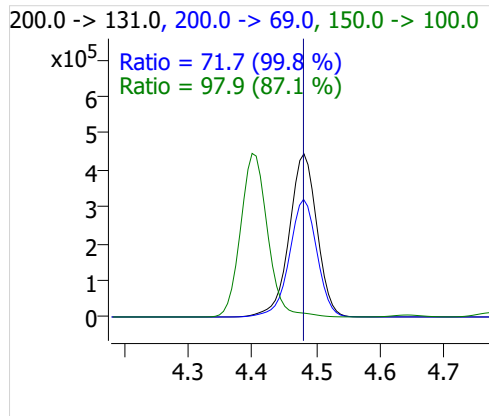
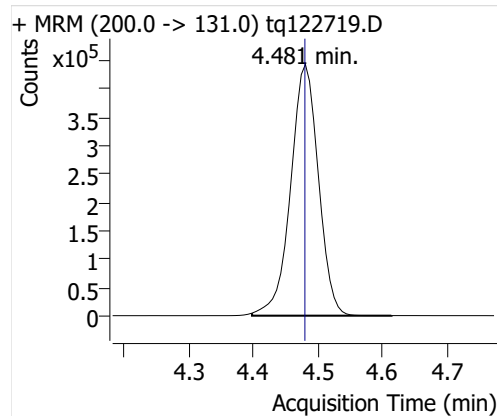


| Compound | ISTD | RT | Resp. | ISTD Resp. | Resp. Ratio | Final Conc | Units |
|--------------|--------------|--------|---------|------------|-------------|------------|-------|
| PFBA | 6:2 FTOH-C13 | 4.399 | 1310874 | 43270 | 30.2953 | 9.0408 | ng |
| PFPeA | 6:2 FTOH-C13 | 4.481 | 1329875 | 43270 | 30.7344 | 10.3378 | ng |
| PFHxA | 6:2 FTOH-C13 | 4.639 | 620454 | 43270 | 14.3392 | 10.3578 | ng |
| PFHpA | 6:2 FTOH-C13 | 4.920 | 413734 | 43270 | 9.5617 | 10.1284 | ng |
| PFOA | 6:2 FTOH-C13 | 5.348 | 250079 | 43270 | 5.7795 | 9.5761 | ng |
| 4:2 FTOH | 6:2 FTOH-C13 | 11.688 | 208650 | 43270 | 4.8220 | 10.2459 | ng |
| 5:2sFTOH | 6:2 FTOH-C13 | 11.757 | 103876 | 43270 | 2.4007 | 10.1299 | ng |
| 7:2sFTOH | 6:2 FTOH-C13 | 13.064 | 223559 | 43270 | 5.1666 | 10.0593 | ng |
| 6:2 FTOH | 6:2 FTOH-C13 | 13.090 | 405454 | 43270 | 9.3703 | 10.2336 | ng |
| 8:2 FTOH-C13 | 6:2 FTOH-C13 | 14.293 | 17375 | 43270 | 0.4015 | 1.0309 | ng |
| 8:2 FTOH | 6:2 FTOH-C13 | 14.300 | 121185 | 43270 | 2.8007 | 10.7922 | ng |
| 10:2 FTOH | 6:2 FTOH-C13 | 15.370 | 45028 | 43270 | 1.0406 | 9.5468 | ng |
| 12:2 FTOH | 6:2 FTOH-C13 | 16.357 | 181182 | 43270 | 4.1873 | 10.0142 | ng |
| NMeFOSA | 6:2 FTOH-C13 | 18.830 | 648919 | 43270 | 14.9970 | 9.4176 | ng |
| NEtFOSA | 6:2 FTOH-C13 | 18.831 | 592338 | 43270 | 13.6894 | 9.4971 | ng |

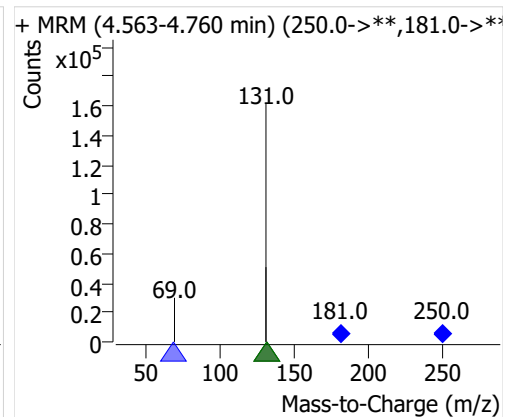
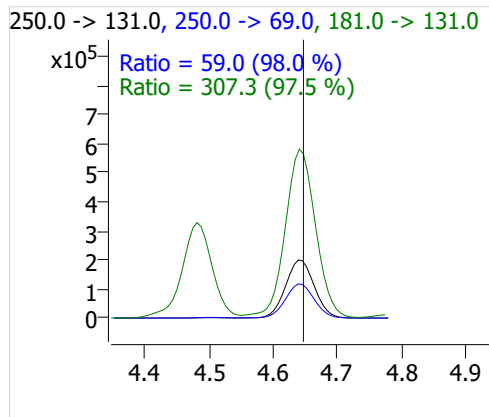
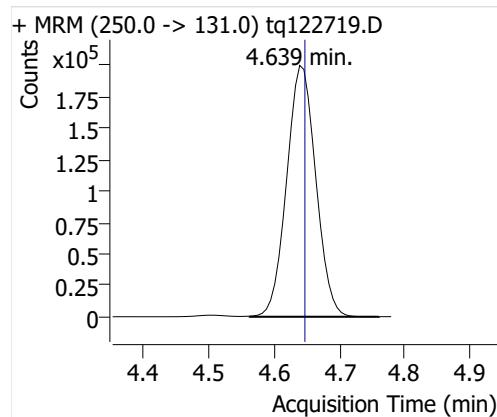
PFBA



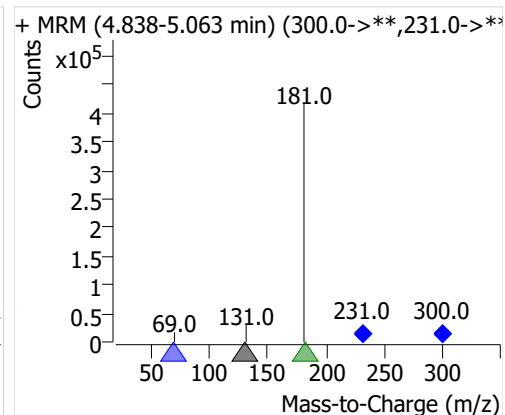
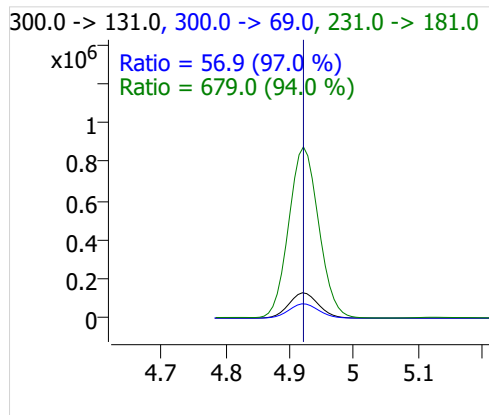
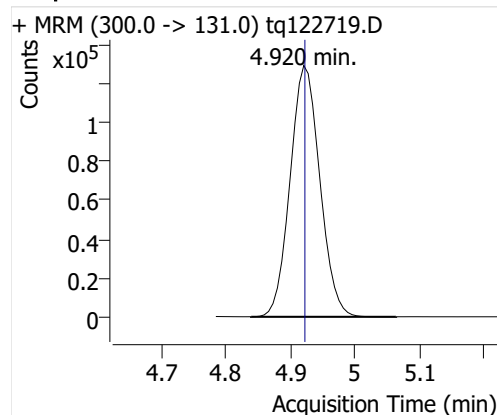
PFPeA



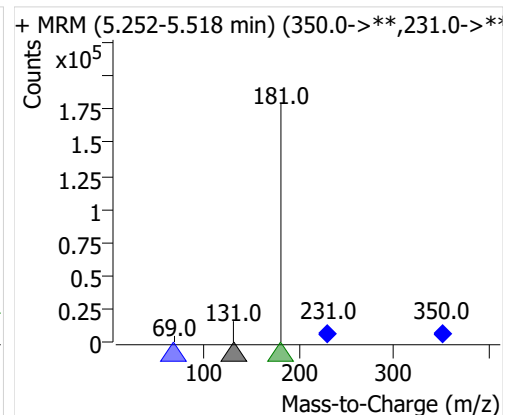
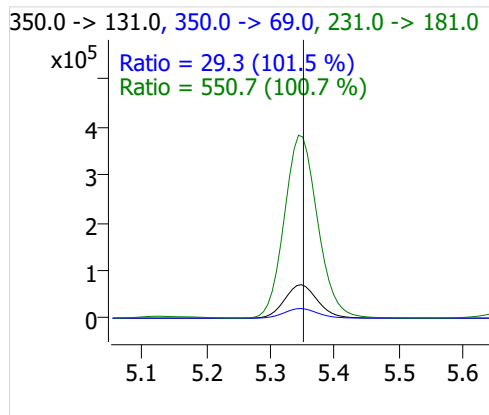
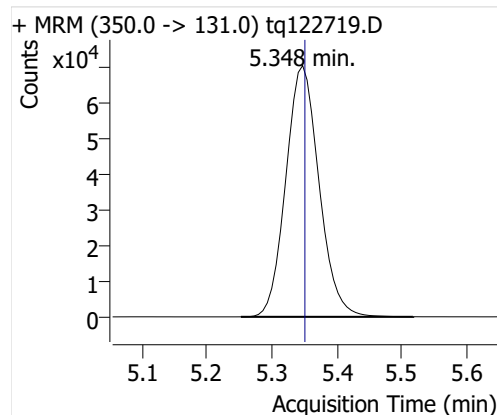
PFHxA



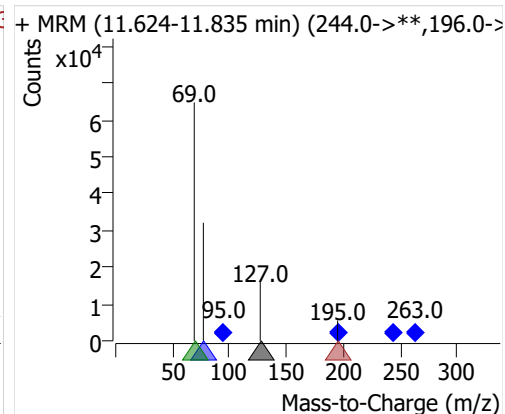
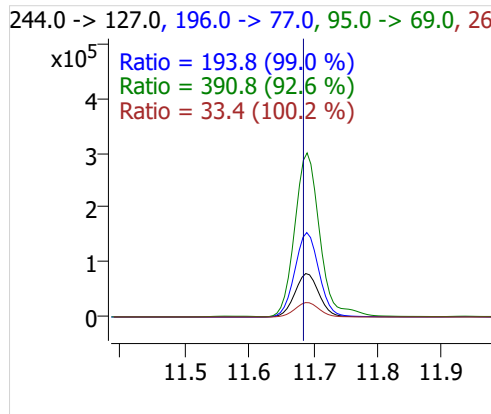
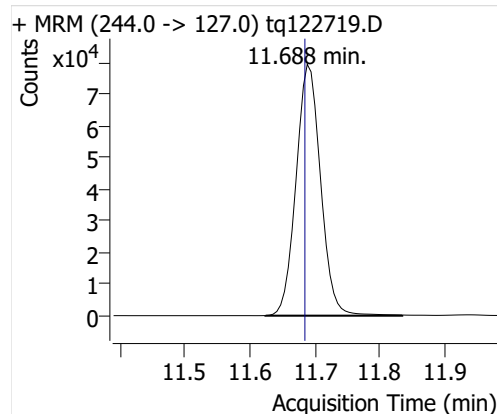
PFHpA



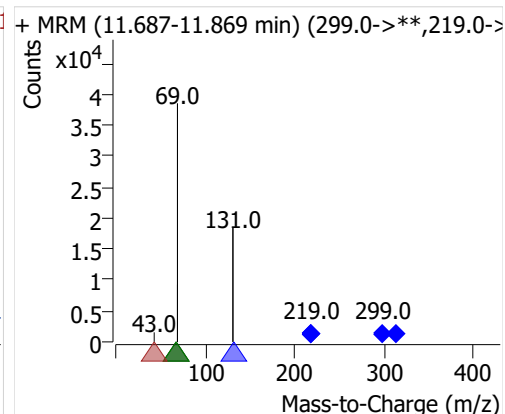
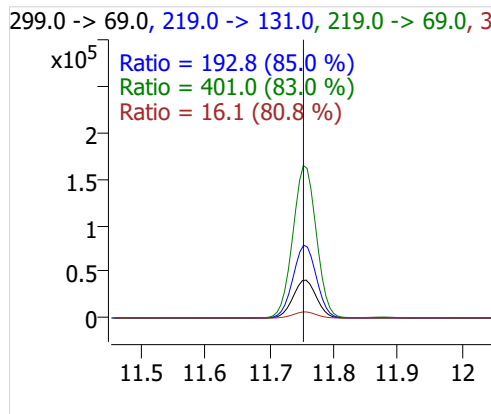
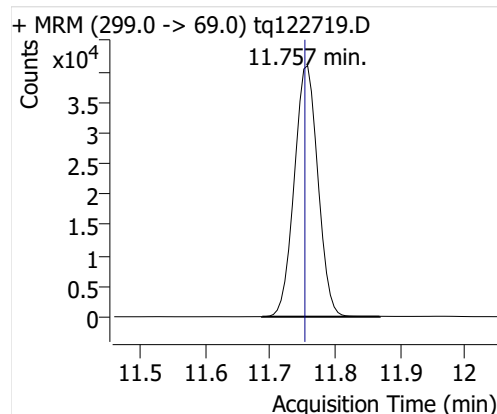
PFOA



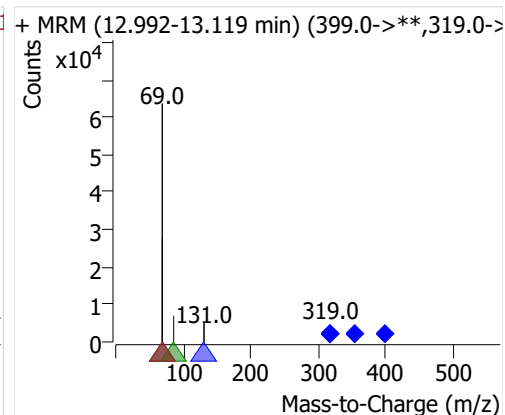
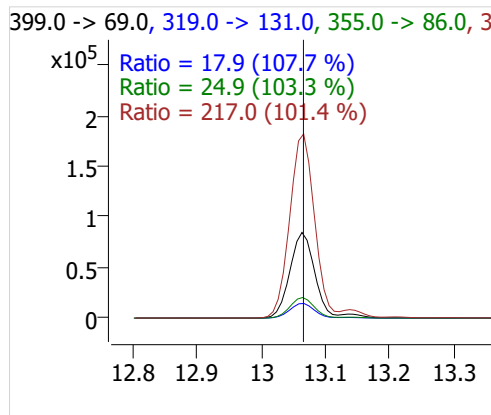
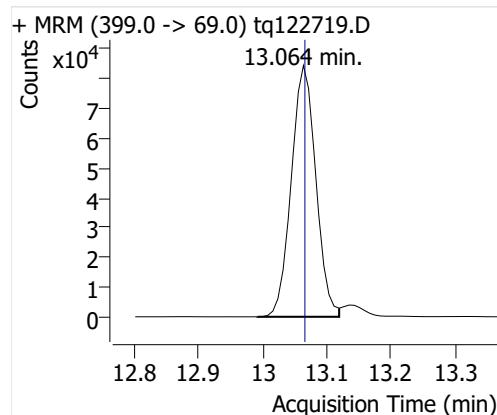
4:2 FTOH



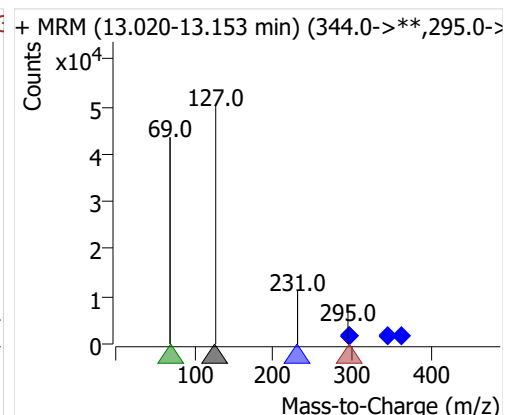
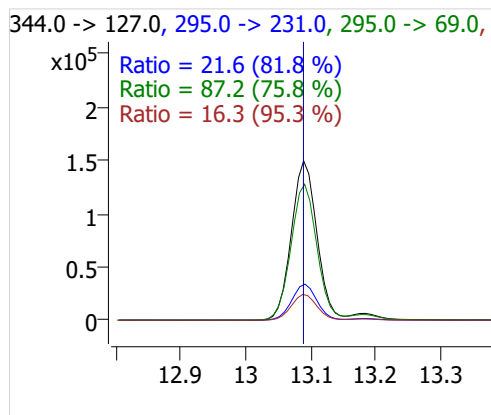
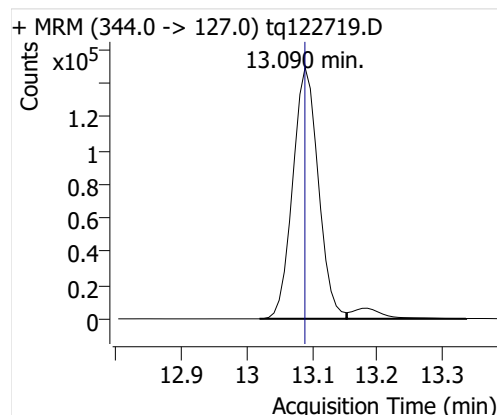
5:2sFTOH



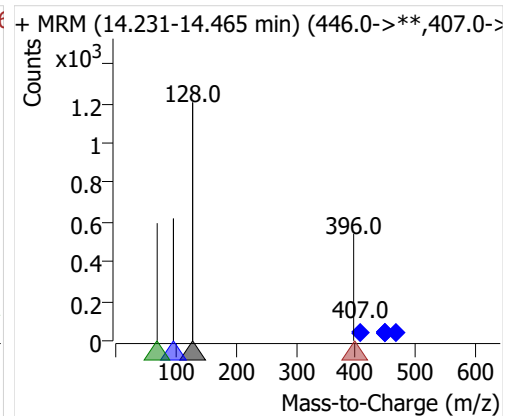
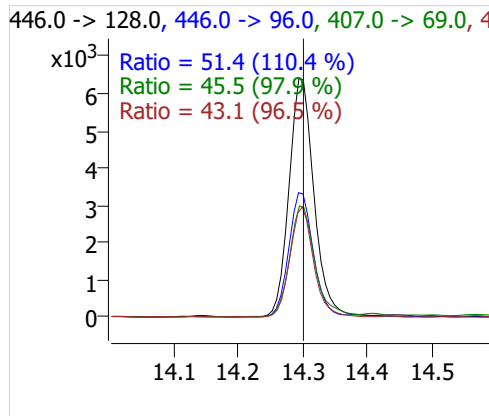
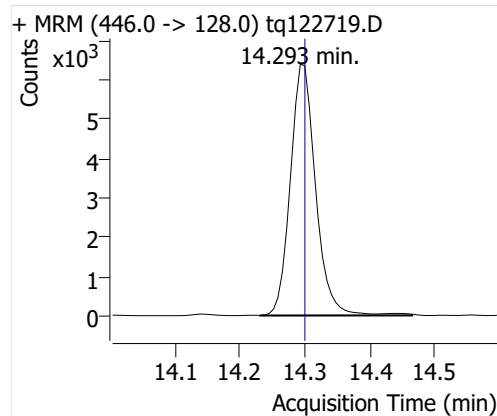
7:2sFTOH



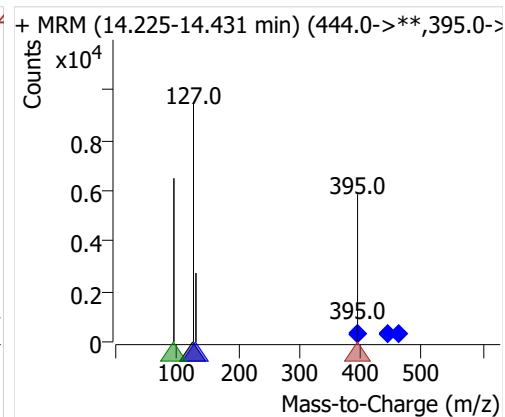
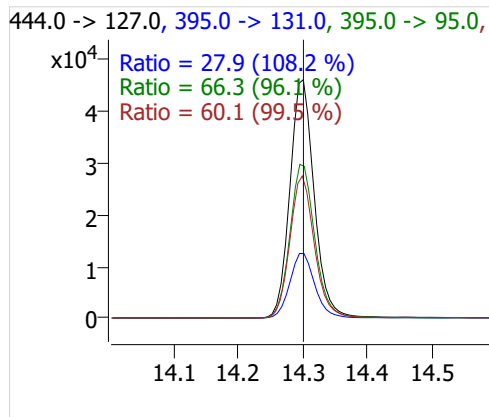
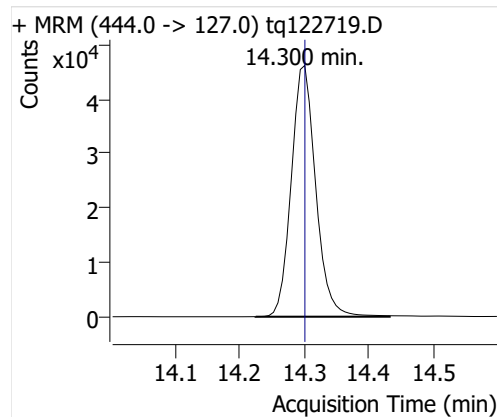
6:2 FTOH



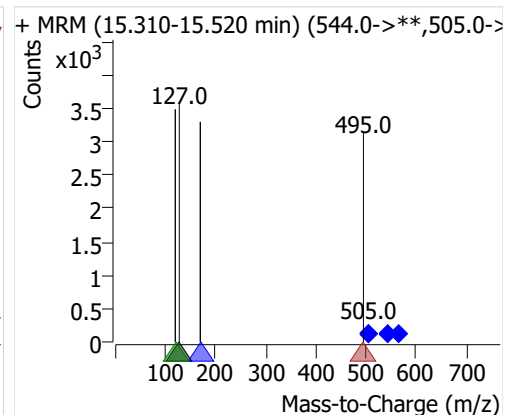
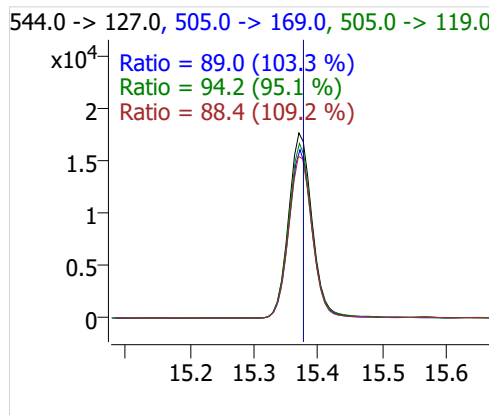
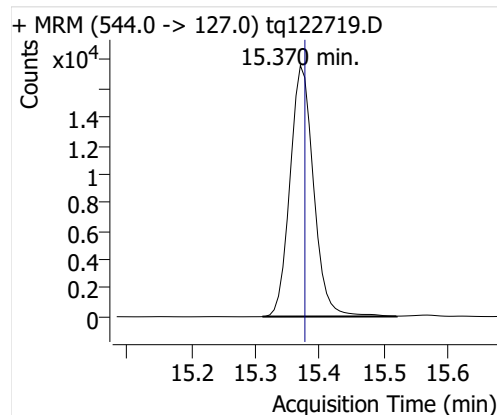
8:2 FTOH-C13



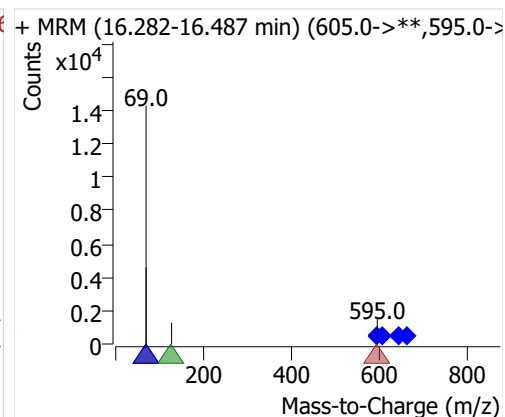
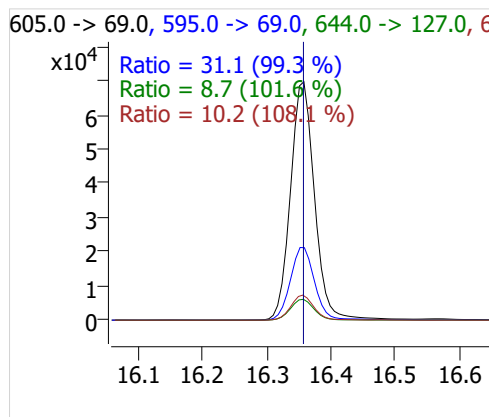
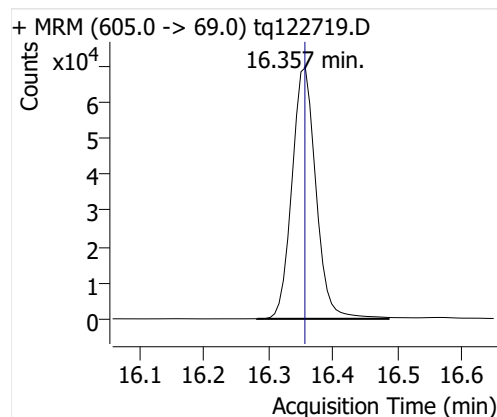
8:2 FTOH



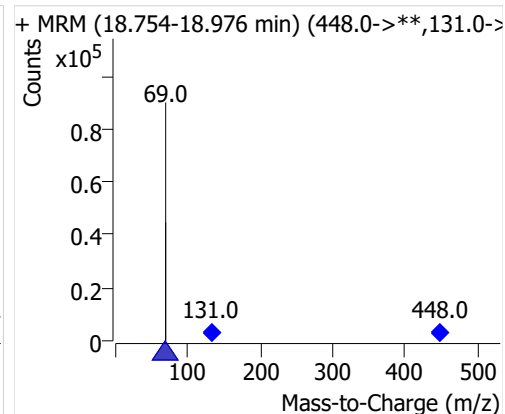
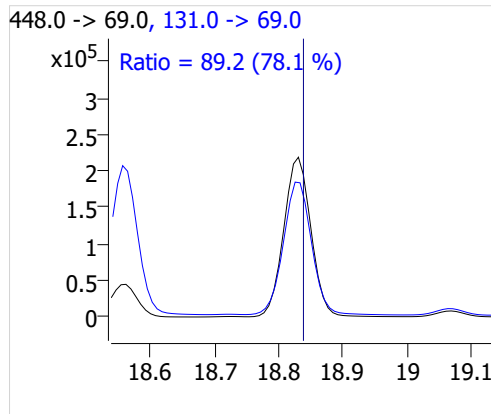
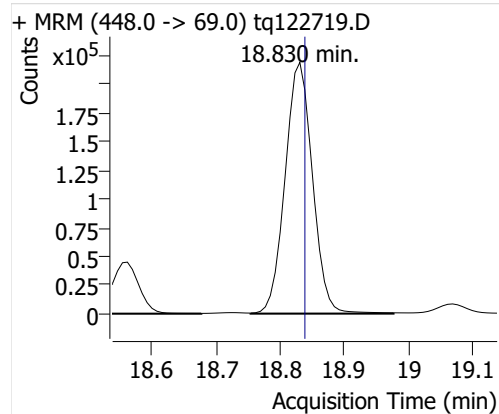
10:2 FTOH



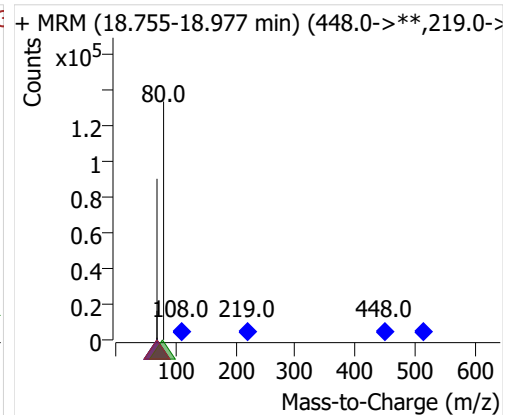
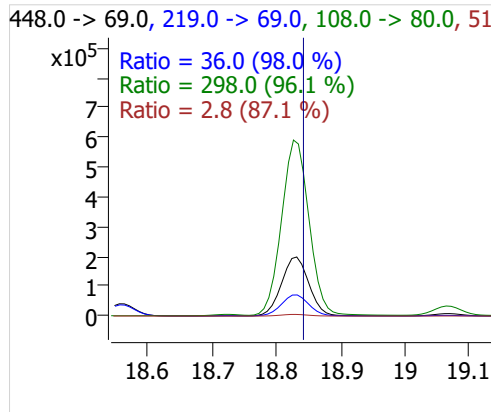
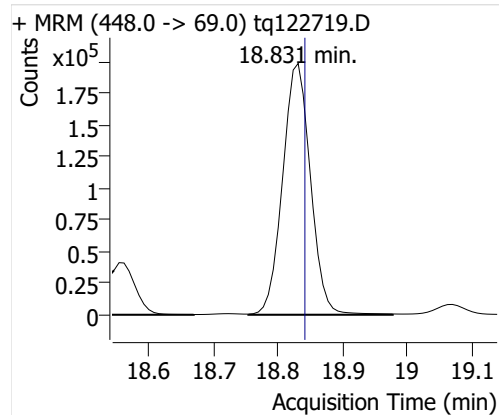
12:2 FTOH



NMeFOSA



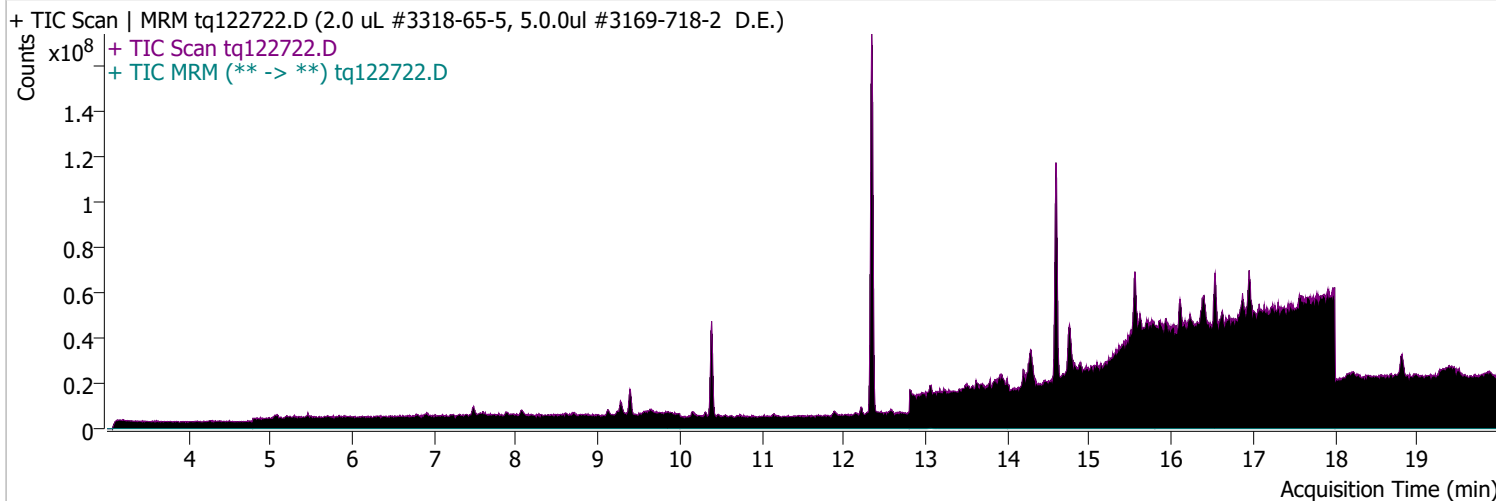
NEtFOSA



Quantitative Analysis Sample Report

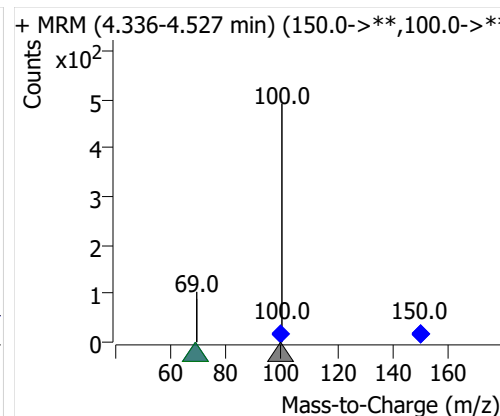
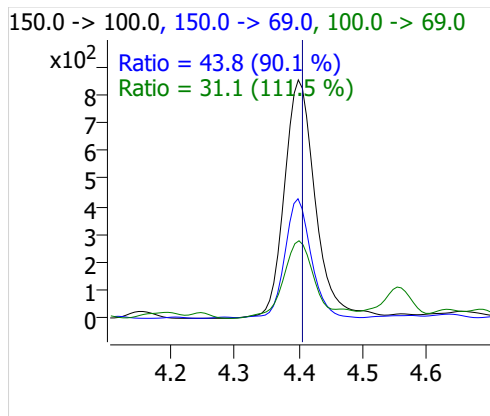
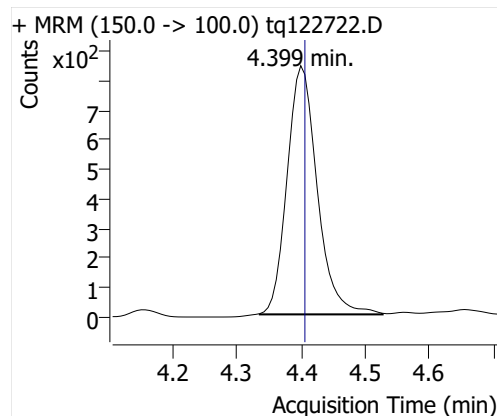
Batch Path D:\MassHunter\GCMS\1\data\27dec22a\QuantResults\tq22m1227a.batch.bin
 Analysis Time 1/3/2023 2:39 PM Analyst Name TAI\us32_usr_ins22923
 Report Time 1/5/2023 3:17:26 PM Reporter Name TAI\us32_usr_ins22923
 Last Calib Update 1/3/2023 2:39 PM Batch State Processed
 Quant Batch Version 10.1 Quant Report Version 10.1
 Acq. Time 12/28/2022 9:42 AM Data File tq122722.D
 Sample Type Sample Sample Name 2.0 uL #3318-65-5, 5.0.0ul #3169-718-2 D.E.
 Dilution 1 Acq. Method tq22m1209

Sample Chromatogram

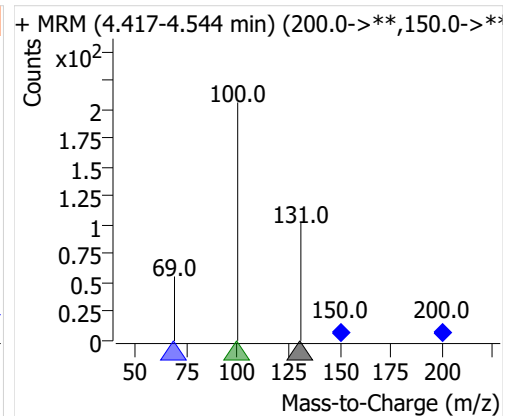
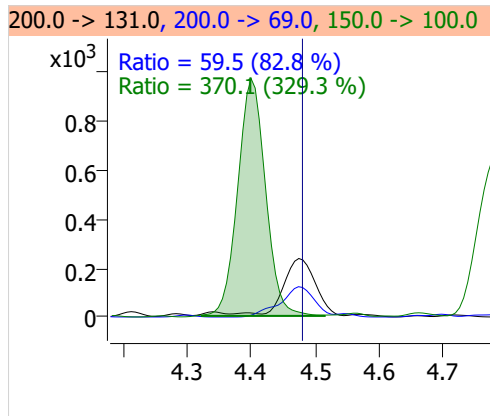
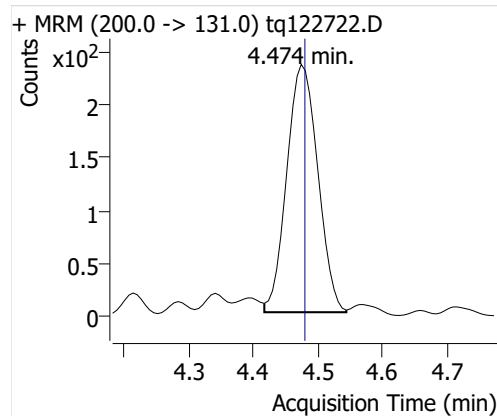


| Compound | ISTD | RT | Resp. | ISTD Resp. | Resp. Ratio | Final Conc | Units |
|--------------|--------------|--------|-------|------------|-------------|------------|-------|
| PFBA | 6:2 FTOH-C13 | 4.399 | 2751 | 45228 | 0.0608 | 0.0182 | ng |
| PFPeA | 6:2 FTOH-C13 | 4.474 | 789 | 45228 | 0.0175 | 0.0059 | ng |
| PFHxA | 6:2 FTOH-C13 | 4.645 | 348 | 45228 | 0.0077 | 0.0056 | ng |
| PFHpA | 6:2 FTOH-C13 | 4.927 | 178 | 45228 | 0.0039 | 0.0042 | ng |
| PFOA | 6:2 FTOH-C13 | 5.348 | 715 | 45228 | 0.0158 | 0.0262 | ng |
| 4:2 FTOH | 6:2 FTOH-C13 | 11.688 | 187 | 45228 | 0.0041 | 0.0088 | ng |
| 5:2sFTOH | 6:2 FTOH-C13 | 11.675 | 56 | 45228 | 0.0012 | 0.0052 | ng |
| 7:2sFTOH | 6:2 FTOH-C13 | 12.961 | 116 | 45228 | 0.0026 | 0.0050 | ng |
| 6:2 FTOH | 6:2 FTOH-C13 | 13.089 | 1856 | 45228 | 0.0410 | 0.0448 | ng |
| 8:2 FTOH-C13 | 6:2 FTOH-C13 | 14.286 | 117 | 45228 | 0.0026 | 0.0067 | ng |
| 8:2 FTOH | 6:2 FTOH-C13 | 14.293 | 247 | 45228 | 0.0055 | 0.0211 | ng |
| 10:2 FTOH | 6:2 FTOH-C13 | 15.376 | 94 | 45228 | 0.0021 | 0.0190 | ng |
| 12:2 FTOH | 6:2 FTOH-C13 | 16.357 | 519 | 45228 | 0.0115 | 0.0275 | ng |
| NMeFOSA | 6:2 FTOH-C13 | 18.830 | 740 | 45228 | 0.0164 | 0.0103 | ng |
| NEtFOSA | 6:2 FTOH-C13 | 18.831 | 654 | 45228 | 0.0145 | 0.0100 | ng |

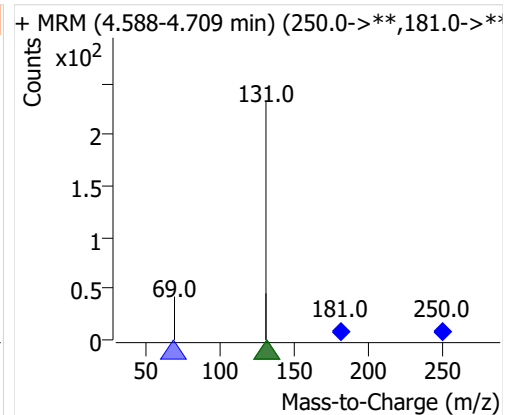
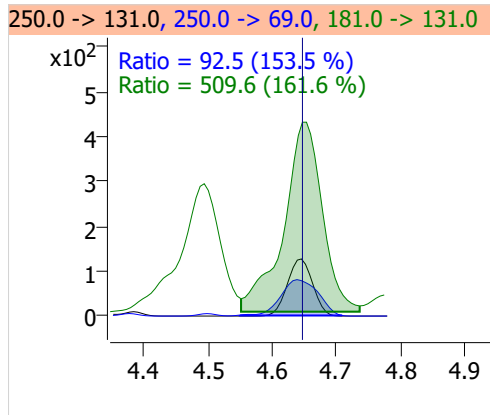
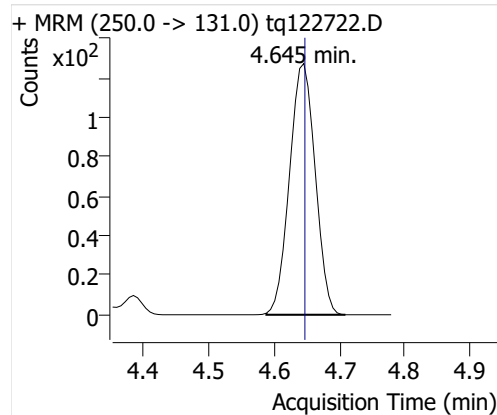
PFBA



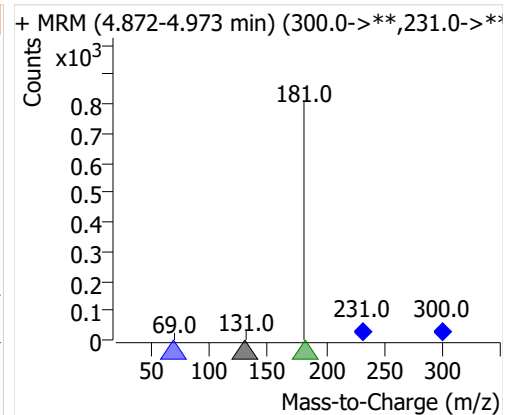
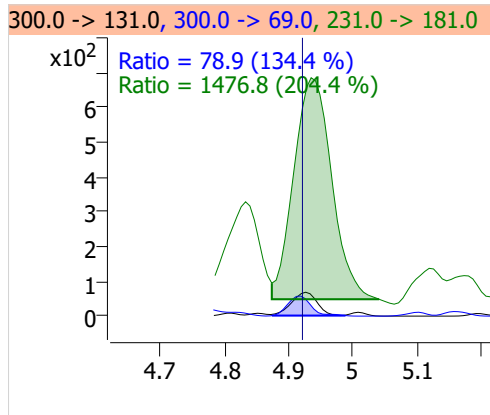
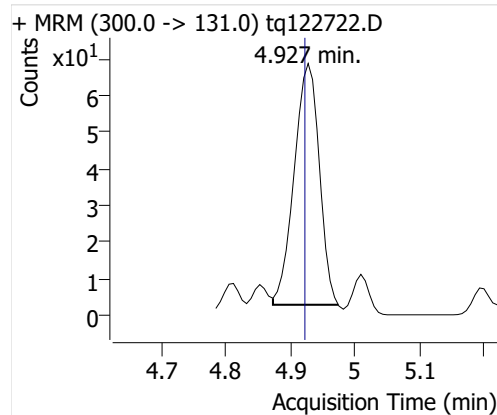
PFPeA



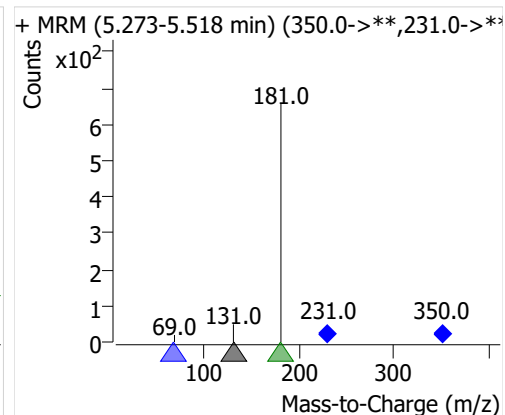
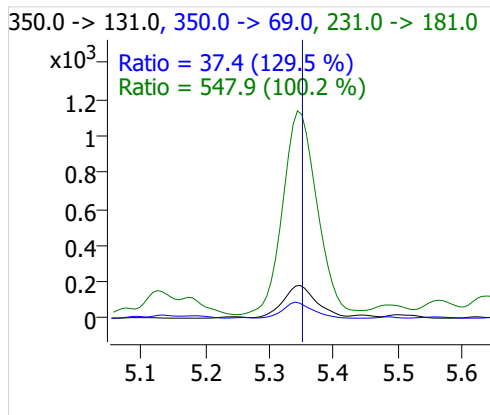
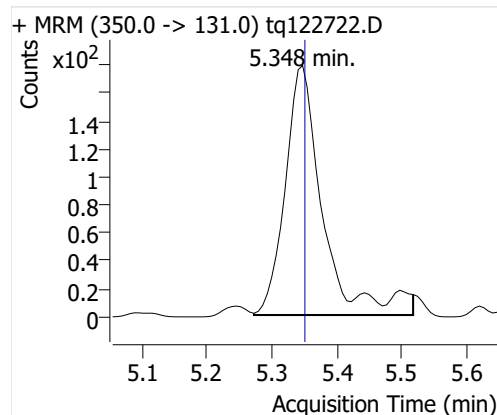
PFHxA



PFHpA

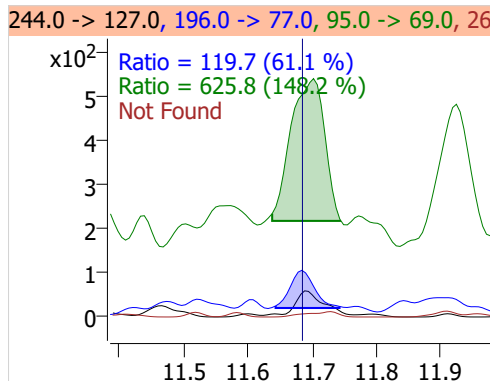
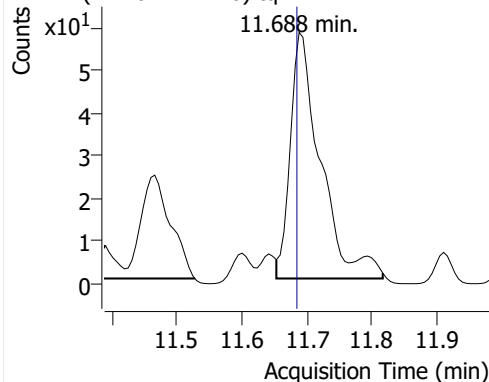


PFOA

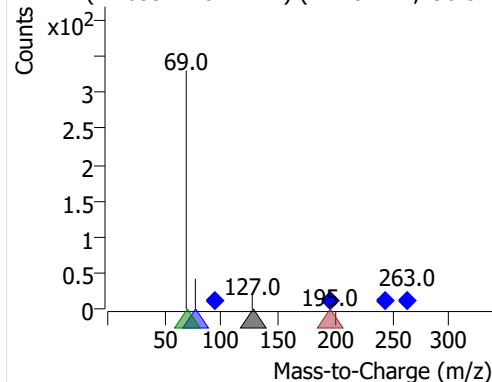


4:2 FTOH

+ MRM (244.0 -> 127.0) tq122722.D

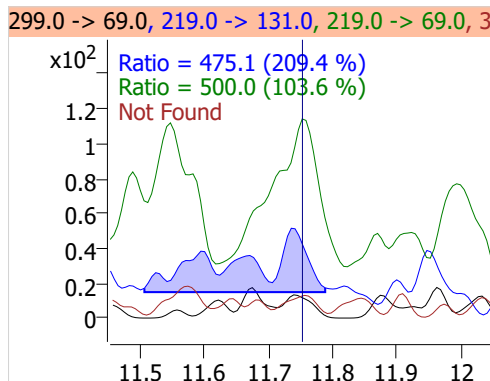
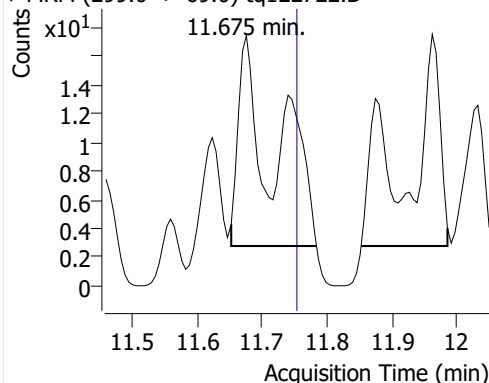


+ MRM (11.653-11.817 min) (244.0->**,196.0->

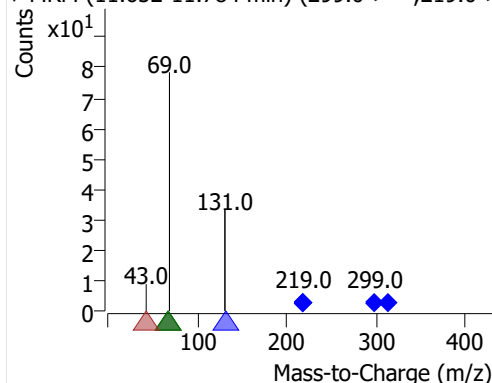


5:2sFTOH

+ MRM (299.0 -> 69.0) tq122722.D

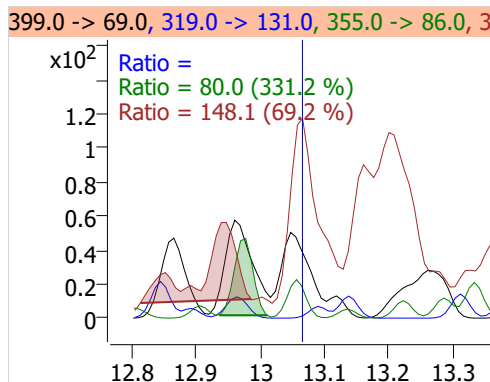
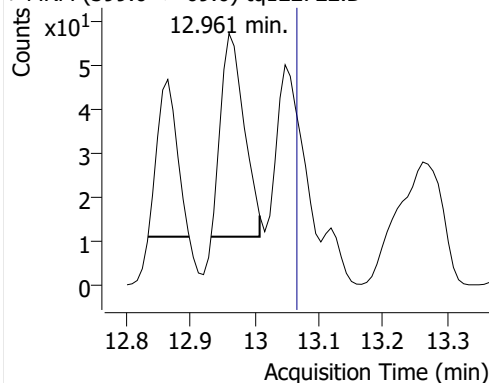


+ MRM (11.652-11.784 min) (299.0->**,219.0->

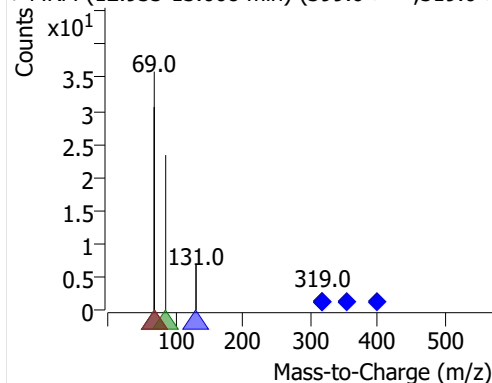


7:2sFTOH

+ MRM (399.0 -> 69.0) tq122722.D

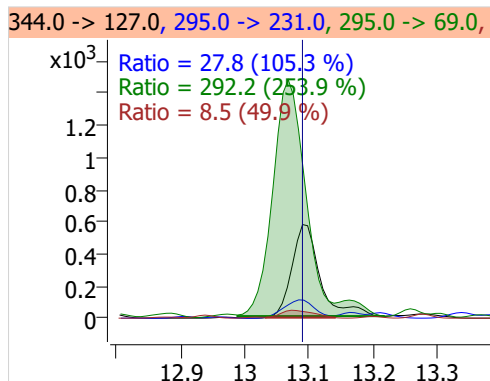
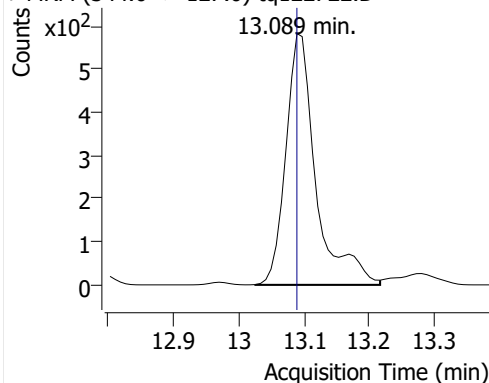


+ MRM (12.933-13.008 min) (399.0->**,319.0->

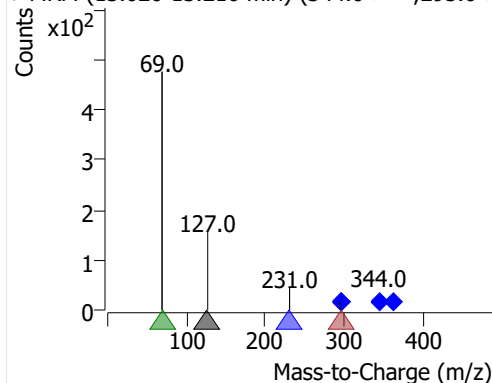


6:2 FTOH

+ MRM (344.0 -> 127.0) tq122722.D

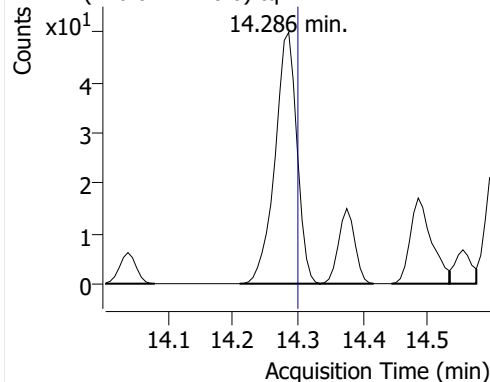


+ MRM (13.026-13.216 min) (344.0->**,295.0->

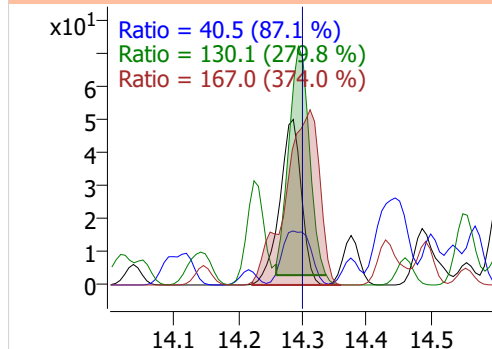


8:2 FTOH-C13

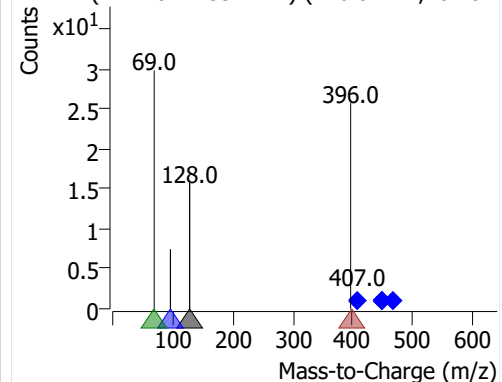
+ MRM (446.0 -> 128.0) tq122722.D



446.0 -> 128.0, 446.0 -> 96.0, 407.0 -> 69.0, 407.0 -> 128.0

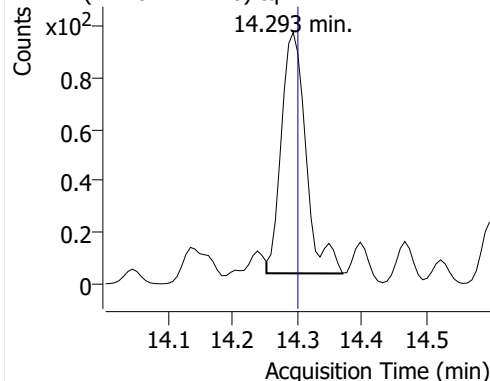


+ MRM (14.210-14.334 min) (446.0->**,407.0->**)

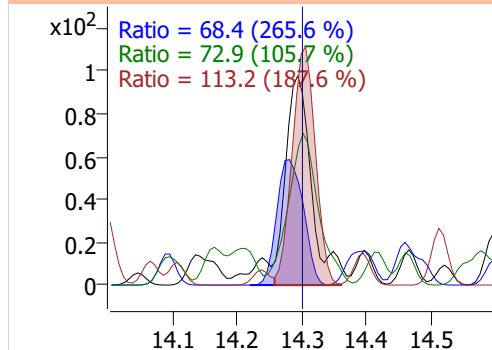


8:2 FTOH

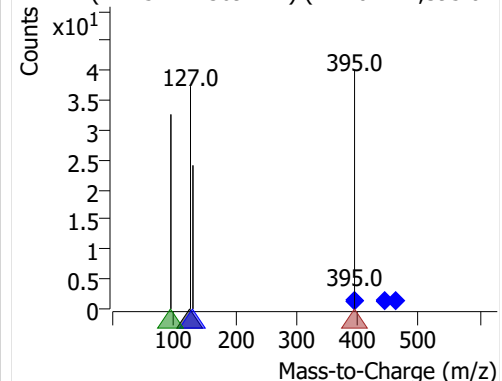
+ MRM (444.0 -> 127.0) tq122722.D



444.0 -> 127.0, 395.0 -> 131.0, 395.0 -> 95.0, 395.0 -> 127.0

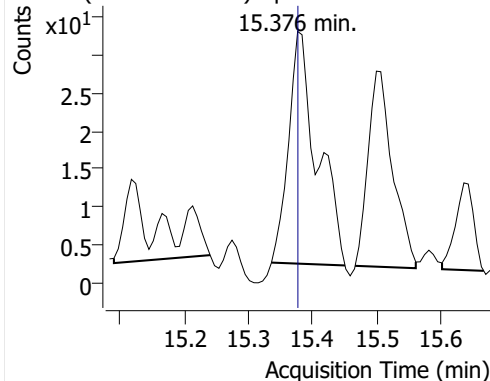


+ MRM (14.252-14.369 min) (444.0->**,395.0->**)

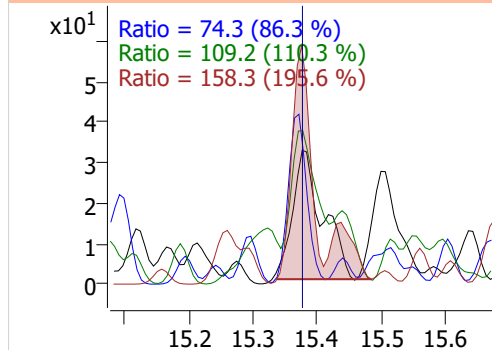


10:2 FTOH

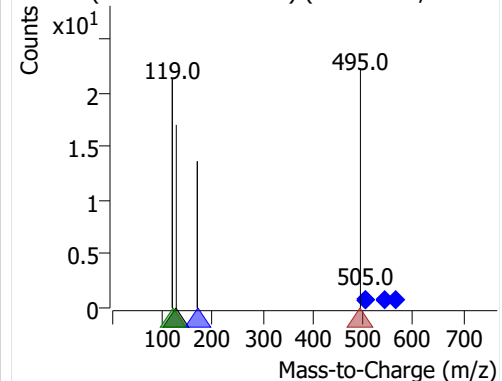
+ MRM (544.0 -> 127.0) tq122722.D



544.0 -> 127.0, 505.0 -> 169.0, 505.0 -> 119.0, 505.0 -> 127.0

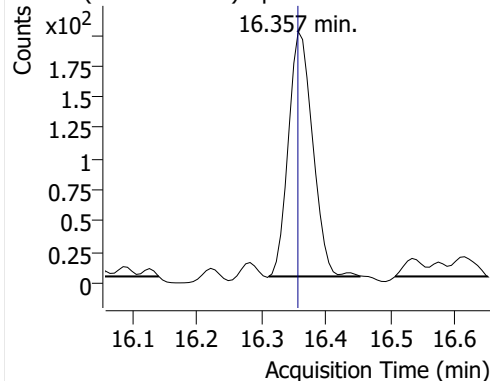


+ MRM (15.335-15.450 min) (544.0->**,505.0->**)

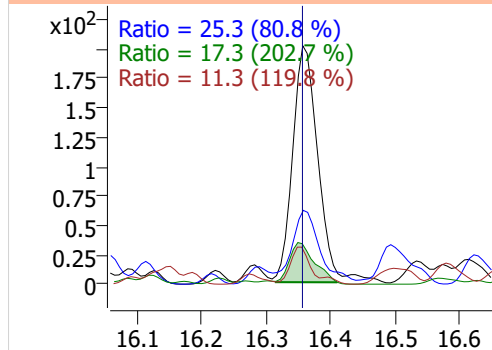


12:2 FTOH

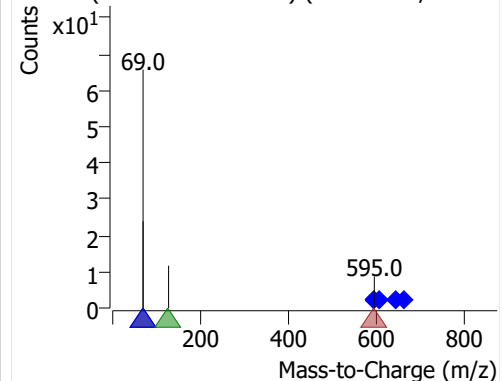
+ MRM (605.0 -> 69.0) tq122722.D



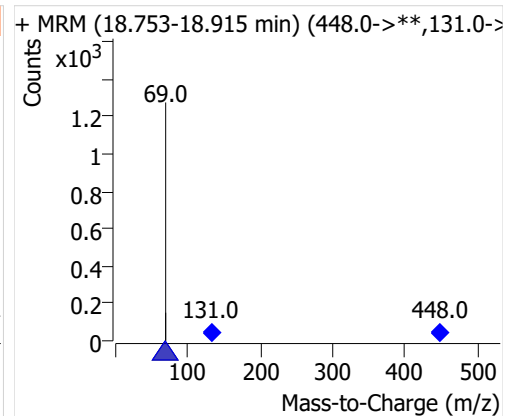
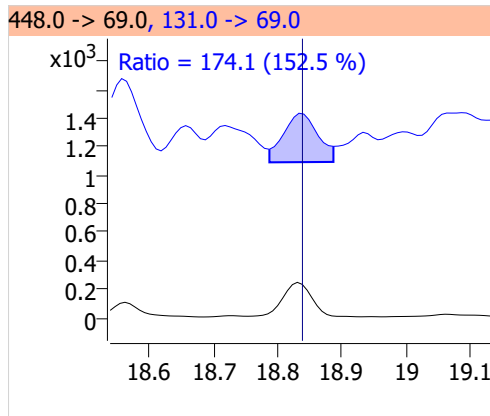
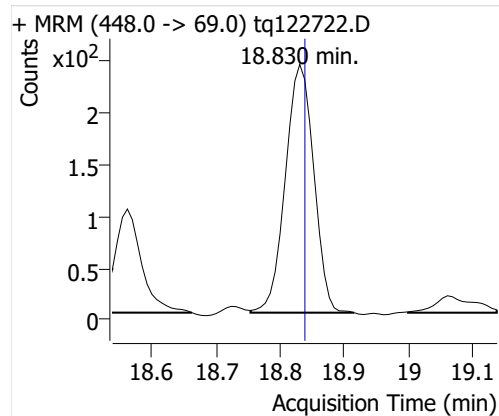
605.0 -> 69.0, 595.0 -> 69.0, 644.0 -> 127.0, 644.0 -> 69.0



+ MRM (16.311-16.452 min) (605.0->**,595.0->**)



NMeFOSA



NEtFOSA

